



Biltmore Professional Office & Retail Space

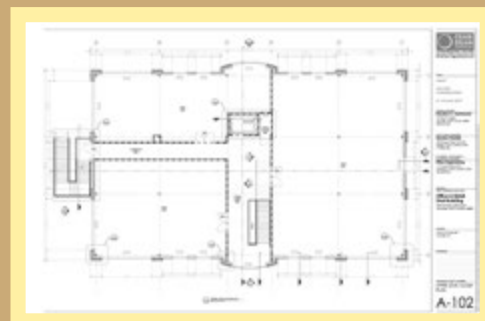


852 Hendersonville Road, Asheville, NC 28803

COMING SOON



Individual Office & Retail Units



For Sale or Lease



852 Hendersonville Road, Asheville, NC 28803

- Individual office and retail suites for sale or lease
- Entire buildings and/or building pads available for purchase
- High traffic corridor in professional/retail area

I-40 Traffic Count: 40,000 vehicles/day
Hendersonville Road Traffic Count: 30,000 vehicles/day

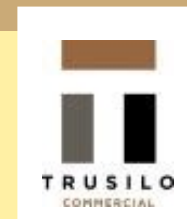


852 Hendersonville Road, Asheville, NC 28803

2018 DEMOGRAPHICS

Radius	Population	Avg. HH Income
1 Mile	5,549	\$70,310
3 Mile	28,226	\$75,535
5 Mile	86,349	\$69,914

For leasing info, contact:



828.713.4575