

1.24 AC AVAILABLE FOR SALE

1450 Sand Hill Road
Candler, NC 28715



1091 Hendersonville Road
Asheville, NC 28803

828-274-2479

LewisRealEstateNC.com

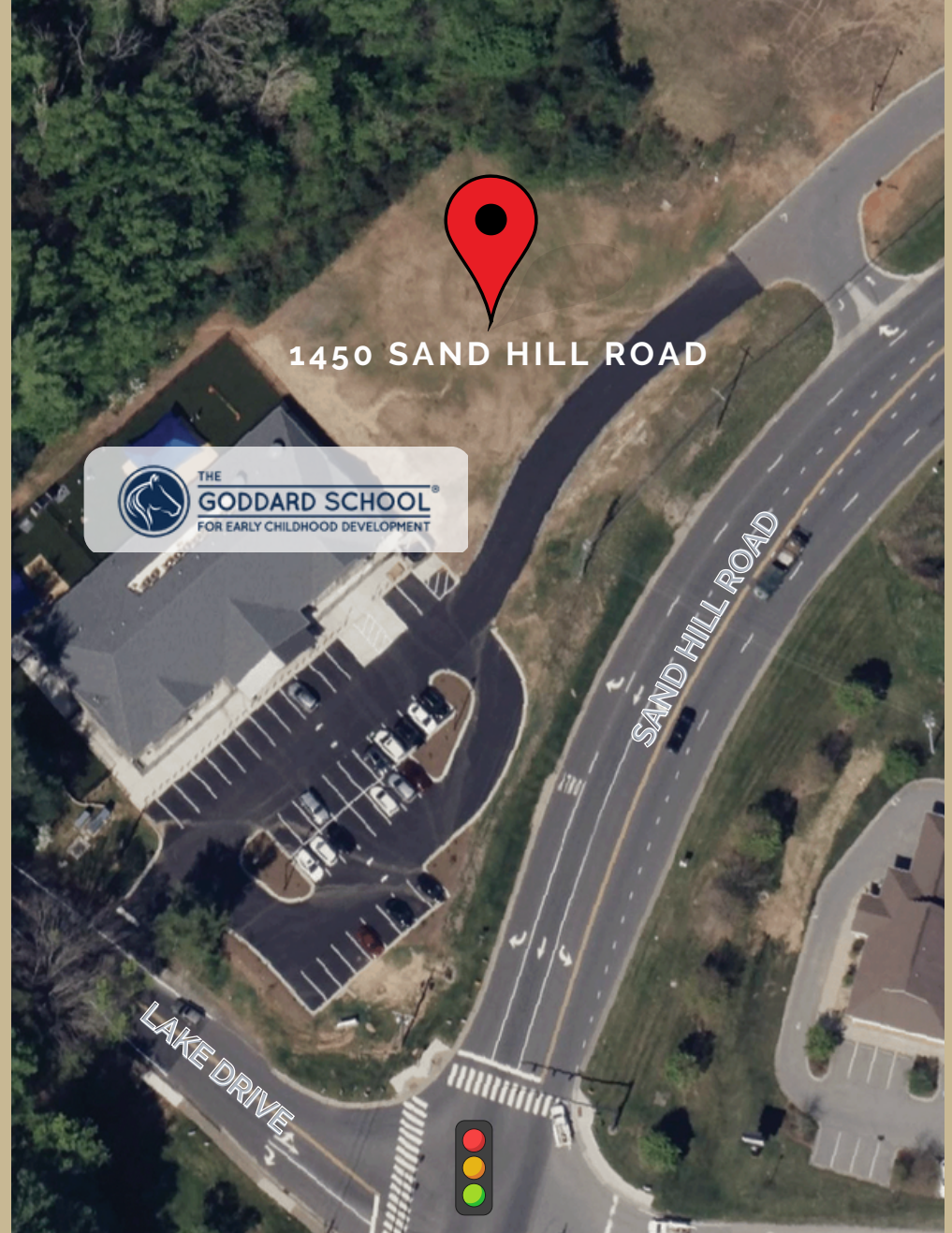


COMMERCIAL, OFFICE OR RETAIL LOCATION

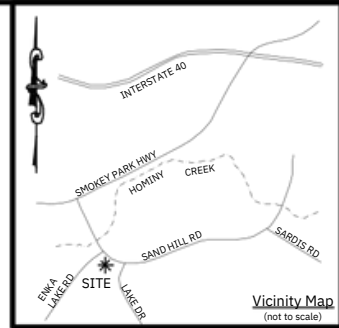
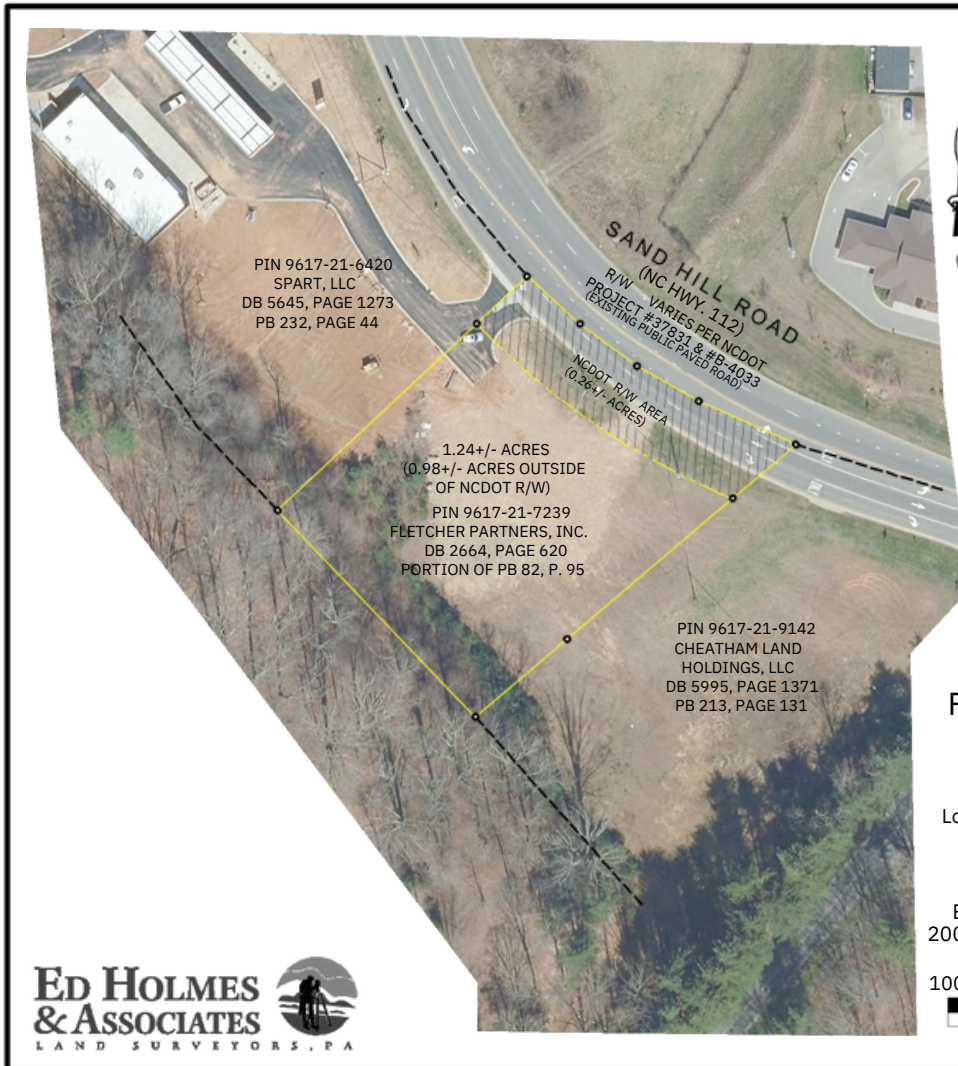
OVERVIEW

SALE OR LEASE
\$675,000

- 1.24-Acre, Pad Ready Site
- Access to Corner Traffic Light with Service Road in Place
- Centrally Located Near Biltmore Lake and Residential Amenities including Grocery Stores, Schools, Library, Sports Fields and the new Enka Heritage Greenway







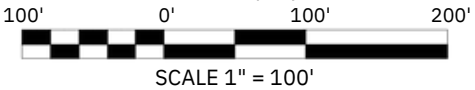
NC GRID NORTH
MAD 83 FROM GPS

NOTES

- * This is an exhibit of 1 existing parcel. Total acreage is 1.24 +/- acres. Approximately 0.26 acres lies within NCDOT R/W.
- * All information taken from recorded deeds and plats. No surveying field work was conducted to produce this exhibit.

**Boundary Exhibit for
FLETCHER PARTNERS, INC.
REFERENCES**

Being all of PIN 9617-21-7239
as described in Deed Book 2664, Page 620
Lower Hominy Township, Buncombe County, N.C.
Date: 02-23-2023 Drawn By: M. Edgerton
Job#: 23031 Checked By: B. Brown
C. M. Edgerton, Jr., PLS
Ed Holmes & Associates Land Surveyors, PA
200 Ridgefield Ct., Suite 208, Asheville, NC 28806
828.225.6562 Company# C-2806



1091 Hendersonville Road
Asheville, NC 28803
828-274-2479
LewisRealEstateNC.com